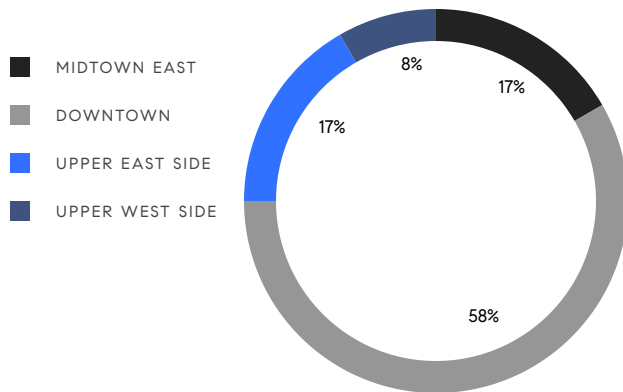


MANHATTAN WEEKLY LUXURY REPORT



555 WEST END AVE #PH-TERRACE, PHOTO BY AMANDA JAMES / DDREPS

RESIDENTIAL CONTRACTS
\$5 MILLION AND UP



12
CONTRACTS SIGNED
THIS WEEK

\$134,250,990
TOTAL CONTRACT VOLUME

The Manhattan luxury real estate market, defined as all properties priced \$5M and above, saw 12 contracts signed this week, made up of 10 condos, 1 co-op, and 1 house. The previous week saw 10 deals. For more information or data, please reach out to a Compass agent.

\$11,187,583

AVERAGE ASKING PRICE

\$9,915,495

MEDIAN ASKING PRICE

\$3,049

AVERAGE PPSF

3%

AVERAGE DISCOUNT

\$134,250,990

TOTAL VOLUME

290

AVERAGE DAYS ON MARKET

Unit PH20 at 111 West 57th Street in Midtown East entered contract this week, with a last asking price of \$21,000,000. This penthouse condo unit spans 5,269 square feet with 3 beds and 4 full baths. It features 3,788 square feet of outdoor space, a private elevator with formal entrance gallery, a south gallery with 26-foot vaulted ceilings and arched glass doors leading to a wraparound terrace, a windowed kitchen with high-end appliances, an upstairs primary suite with a spa-like bathroom, and much more. The building provides a fitness center and 82-foot swimming pool, 24-hour attended entrances and concierge service, and many other amenities.

Also signed this week was Unit 11BW at 555 West 22nd Street in Chelsea, with a last asking price of \$17,500,000. This condo unit spans 2,938 square feet with 3 beds and 3 full baths. It features a 3,510 square foot private terrace with outdoor kitchen and river and city views, an open living and dining area, wood flooring, floor-to-ceiling windows, a primary bedroom suite with fireplace and double walk-in closets, and much more. The building provides a full-time doorman, a concierge, a fitness area with pool, parking, and many other amenities.

10

CONDO DEAL(S)

1

CO-OP DEAL(S)

1

TOWNHOUSE DEAL(S)

\$11,475,599

AVERAGE ASKING PRICE

\$12,000,000

AVERAGE ASKING PRICE

\$7,495,000

AVERAGE ASKING PRICE

\$9,915,495

MEDIAN ASKING PRICE

\$12,000,000

MEDIAN ASKING PRICE

\$7,495,000

MEDIAN ASKING PRICE

\$3,149

AVERAGE PPSF

\$2,142

AVERAGE PPSF

3,894

AVERAGE SQFT

3,500

AVERAGE SQFT



111 WEST 57TH ST #PH20

Midtown East

TYPE	CONDO	STATUS	CONTRACT	ASK	\$21,000,000	INITIAL	\$21,000,000
SQFT	5,269	PPSF	\$3,986	BEDS	4.5	BATHS	4.5
FEES	\$20,342	DOM	160				



555 WEST 22ND ST #11BW

Chelsea

TYPE	CONDO	STATUS	CONTRACT	ASK	\$17,500,000	INITIAL	N/A
SQFT	2,938	PPSF	\$5,957	BEDS	3	BATHS	3
FEES	\$13,184	DOM	N/A				



555 WEST 22ND ST #9ABW

Chelsea

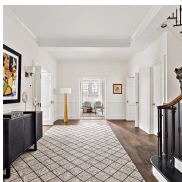
TYPE	CONDO	STATUS	CONTRACT	ASK	\$16,600,000	INITIAL	N/A
SQFT	5,582	PPSF	\$2,974	BEDS	5	BATHS	5
FEES	\$18,922	DOM	N/A				



93 CHARLES ST #TH1

West Village

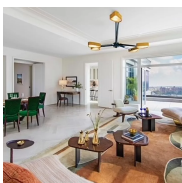
TYPE	CONDO	STATUS	CONTRACT	ASK	\$13,995,000	INITIAL	\$13,995,000
SQFT	6,261	PPSF	\$2,236	BEDS	4	BATHS	4
FEES	\$13,966	DOM	30				



895 PARK AVE #4/5A

Upper East Side

TYPE	COOP	STATUS	CONTRACT	ASK	\$12,000,000	INITIAL	\$12,000,000
SQFT	N/A	PPSF	N/A	BEDS	7.5	BATHS	7.5
FEES	N/A	DOM	68				



40 EAST END AVE #PH16

Upper East Side

TYPE	CONDO	STATUS	CONTRACT	ASK	\$11,335,990	INITIAL	\$11,385,990
SQFT	3,464	PPSF	\$3,273	BEDS	4	BATHS	4
FEES	\$9,426	DOM	945				

Compass is a licensed real estate broker and abides by Equal Housing Opportunity laws. All material presented herein is intended for informational purposes only. Information is compiled from sources deemed reliable but is subject to errors, omissions, changes in price, condition, sale, or withdrawal without notice. No statement is made as to the accuracy of any description. All measurements and square footages are approximate. This is not intended to solicit property already listed. Nothing herein shall be construed as legal, accounting or other professional advice outside the realm of real estate brokerage.



1 BOND ST #3AB

Noho

TYPE	CONDO	STATUS	CONTRACT	ASK	\$8,495,000	INITIAL	\$9,000,000
SQFT	3,742	PPSF	\$2,271	BEDS	3	BATHS	3.5
FEES	\$5,830	DOM	140				



413 EAST 50TH ST

Turtle Bay

TYPE	TOWNHOUSE	STATUS	CONTRACT	ASK	\$7,495,000	INITIAL	\$9,995,000
SQFT	3,500	PPSF	\$2,142	BEDS	4	BATHS	4.5
FEES	\$5,062	DOM	364				



555 WEST 22ND ST #7HW

Chelsea

TYPE	CONDO	STATUS	CONTRACT	ASK	\$6,950,000	INITIAL	N/A
SQFT	2,760	PPSF	\$2,519	BEDS	3	BATHS	3
FEES	\$8,929	DOM	N/A				



555 WEST 22ND ST #6HW

Chelsea

TYPE	CONDO	STATUS	CONTRACT	ASK	\$6,350,000	INITIAL	N/A
SQFT	2,864	PPSF	\$2,218	BEDS	3	BATHS	3
FEES	\$9,018	DOM	N/A				



10 RIVERSIDE BLVD #33B

Upper West Side

TYPE	CONDO	STATUS	CONTRACT	ASK	\$6,280,000	INITIAL	\$6,280,000
SQFT	2,162	PPSF	\$2,905	BEDS	3	BATHS	3.5
FEES	\$4,492	DOM	580				



134 WEST 13TH ST #TRIPLEX

Greenwich Village

TYPE	CONDO	STATUS	CONTRACT	ASK	\$6,250,000	INITIAL	\$6,250,000
SQFT	N/A	PPSF	N/A	BEDS	4	BATHS	2.5
FEES	\$1,106	DOM	29				

Compass is a licensed real estate broker and abides by Equal Housing Opportunity laws. All material presented herein is intended for informational purposes only. Information is compiled from sources deemed reliable but is subject to errors, omissions, changes in price, condition, sale, or withdrawal without notice. No statement is made as to the accuracy of any description. All measurements and square footages are approximate. This is not intended to solicit property already listed. Nothing herein shall be construed as legal, accounting or other professional advice outside the realm of real estate brokerage.